



# MASP

Michigan Association of School Psychologists



# SUMMER CONFERENCE

**JUNE 20-22, 2018**

**Mission Point • Mackinac Island, MI**

**"School Crisis Prevention & Intervention Training Curriculum"**

# The PREPaRE School Crisis Prevention & Intervention Curriculum

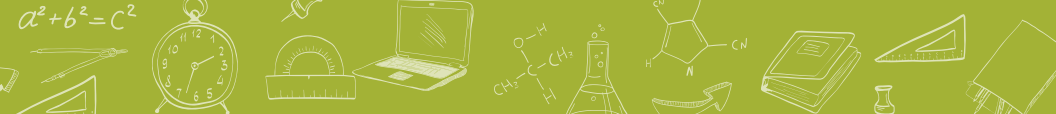
The NASP PREPaRE curriculum provides relevant school personnel with comprehensive training on how to establish and serve on school safety and crisis response teams. The second edition of the curriculum integrates the roles of existing school staff and community providers in terms of the five crisis preparedness mission areas (prevention, protection, mitigation, response, and recovery) and grounds them in ongoing school safety efforts. The curriculum incorporates basic principles articulated by the U.S. Departments of Education (2013) and Homeland Security (2008), as well as the Incident Command System delineated by the National Incident Management System (NIMS).



The curriculum incorporates basic principles articulated by the U.S. Departments of Education (2013) and Homeland Security (2008), as well as the Incident Command System delineated by the National Incident Management System (NIMS).

**The PREPaRE model emphasizes the following hierarchical and sequential set of activities:**

- P Prevent** and prepare for psychological trauma
- R Reaffirm** physical health and perceptions of security and safety
- E Evaluate** psychological trauma risk
- P Provide** interventions
- a and**
- R Respond** to psychological needs
- E Examine** the effectiveness of crisis prevention and intervention



## School Crisis Response

The PREPaRE curriculum has been developed by the National Association of School Psychologists (NASP) as part of its decades long leadership in supporting school crisis prevention and response capabilities at the local level.

### Developed specifically for the school context, PREPaRE:

- Incorporates prevention, protection, mitigation, response, and recovery
- Addresses both physical and psychological safety
- Builds on existing personnel, resources, and programs
- Facilitates collaboration with community providers and first responders
- Integrates with ongoing school safety efforts and multitiered systems of support
- Develops skills important to coping with trauma
- Provides for sustainability through a training of trainers model
- Is adaptable to individual school needs and size
- Aligns with federal emergency management guidance
- Supports legal compliance regarding crisis preparedness

The PREPaRE model has been implemented in school districts in all 50 states and in multiple countries, and it has proven highly effective for schools committed to improving and strengthening their school safety and crisis management capacities.





## The PREPaRE curriculum includes two core workshops:

### WORKSHOP 1

#### **Crisis Prevention and Preparedness:**

##### *Comprehensive School Safety Planning*

This 1-day workshop provides school mental health professionals, administrators, security officers, and other educators knowledge and resources important to establishing and sustaining comprehensive, ongoing school safety and crisis prevention, mitigation, and preparedness. Making use of existing personnel, resources, and programs, PREPaRE can be adapted to a school's needs and size. Specific attention is given to developing, exercising and evaluating safety/crisis teams and plans, and integrating school and community crisis response personnel. Also addressed are issues associated with the media, social media, technology, students with special needs, culture, and memorials. Training reinforces improved school climate, student behavior and academic functioning, student resilience, and school staff crisis response capabilities.

### WORKSHOP 2

#### **Crisis Intervention and Recovery:**

##### *The Roles of School-Based Mental Health Professionals*

This 2-day workshop provides school-based mental health professionals and other school crisis intervention team members with the knowledge necessary to meet the mental health needs of students and staff following school-associated crisis events. This workshop teaches participants how to prevent and prepare for psychological trauma, help to reaffirm both the physical health of members of the school community and students' perceptions that they are safe and secure, evaluate conduct psychological triage, respond to the psychological needs of the school community utilizing a multitiered approach, and examine the effectiveness of school crisis intervention and recovery efforts. This workshop is an excellent course for all professionals in your district who provide mental health crisis intervention services.



## Workshop 1 Presenters

### Melinda Kathleen Gardiner, M.A.

Melinda earned her bachelors degree in Psychology from Michigan State University and her masters in School and Community Psychology from Wayne State University. She is a licensed School Psychologist and is currently employed through Traverse Bay Area Intermediate School District. She has been working in the field for eight years in a variety of school settings, supporting students and families within the community.



### Tracy Hobbs, M.A., NCSP

Tracy earned his Bachelor of Science degree in psychology from Eastern Michigan University and his Master of Arts graduate degree with a concentration in School Psychology from Eastern Illinois University. He is a Nationally Certified School Psychologist and has been a practitioner for 37 years; Tracy is currently employed by the Traverse Bay Area Intermediate School District. Tracy currently serves as a NASP Strategic Liaison and

works closely with the School Safety and Crisis Response Committee; he has been a PREPaRE trainer for two years.



### Lara Lynne MacQuarrie, Ph.D.

Lara is a certified school psychologist with a Ph.D. in Leadership, an Ed.S. in Educational and School Psychology, and an M.A. in Educational and Developmental Psychology. Lara attended Andrews University, a National Association of School Psychologists (NASP) approved program. Lara has worked as a School Psychology Consultant at Oakland Schools for 10 years. She also worked as

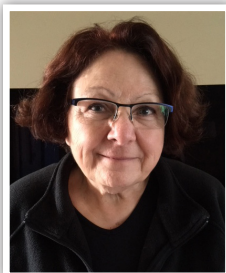
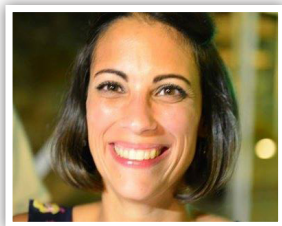
a School Psychologist for the Whitmore Lake Public Schools, Ann Arbor School District, and Lincoln Consolidated Schools for 10 years. Lara taught Educational Psychology, Classroom Assessment, and Learning Differences courses at Eastern Michigan University and provided visiting lectures at the University of Michigan. Lara is a published researcher in the area of instructional methodologies. Lara also coordinated the Victim Assistance Program at Common Ground Crisis Center for 3 years. Lara has provided Critical Incident Stress Debriefing (CISD) in response to post-office shootings, building bombings, deaths, and suicides in the community and the schools.

## Workshop 2 Presenters

### Section 1:

#### **Evelyn Brissman, Psy.Sp., NCSP**

Evelyn earned her Bachelor's in Human Services from Baker College in June 2004. During that time, her passion for advocating for families and children's educational needs blossomed. Such passion led Evelyn to complete graduate work at the University of Detroit Mercy in December 2008, in which she earned a Specialist Degree in School Psychology. Additionally, in January 2016, Evelyn earned the credentials of being a Nationally Certified School Psychologist. Evelyn has been practicing for 10 years and has experience with Early Childhood programs all the way through the age of 26. She is currently employed with Saline Area Schools in which she services the Early Childhood Program through 7th grade and the Young Adult and Alternative Education programs. Evelyn has coached both Summer and Winter Special Olympics, as well as directed a summer-long special needs camp for two years.



#### **Kim Burzynski, LMSW**

Kim is a retired school employee; working as a Special and General Education Paraprofessional for 13 years in the Rochester School District before going on to complete her schooling at the Oakland Community College and the University of Michigan in Ann Arbor. She received her Master's in Social Work specializing in Mental Health and School Social Work in 2000. Kim has worked in several areas

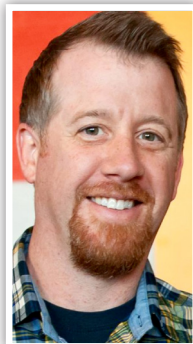
of social work including early childhood, elementary, middle and senior high school levels. She also worked as an Early Childhood Mental Health Consultant to daycare centers in Northwest Detroit, Plymouth and Canton through Development Centers. Kim currently serves on the Michigan Association of School Social Workers State Board, and has lobbied twice in Washington D.C. for an increase in funding for the mental health needs to all students. Kim also served on the MASSW Region A Board as Vice President for three years, and in 2014 was the recipient of School Social Worker of the year.

## Workshop 2 Presenters

### Section 2:

#### **Jim Corr, M.A., S.Psy.S.**

Jim earned his Bachelor of Science Degree as well as his Master of Arts and Specialist in School Psychological Services Degrees from Central Michigan University. He is a certified school psychologist and has practiced for 20 years primarily supporting the behavioral, social and transitional needs of students and their families. Jim currently works at Traverse Bay Area Intermediate School District and serves as the MASP delegate on the Special Education Advisory Committee.



#### **Melinda Kathleen Gardiner, M.A.**

Melinda earned her bachelors degree in Psychology from Michigan State University and her masters in School and Community Psychology from Wayne State University. She is a licensed School Psychologist and is currently employed through Traverse Bay Area Intermediate School District. She has been working in the field for eight years in a variety of school settings, supporting students and families within the community.



#### **Laura Gabel Miller, LMSW**

Laura earned her bachelors degree in Social Policy from Michigan State University, James Madison College. She earned a Masters in Clinical Social Work from Virginia Commonwealth University. She is a certified School Social Worker and has practiced for 18 years in this field in various school settings including schools which support students specifically with behavior and emotional needs. Laura currently works

at Traverse Bay Area Intermediate School District servicing the region of Leelanau County.



## Conference Schedule

### Wednesday, June 20, 2018

7:30am-4:00pm	Registration & Vendors	Sound Stage Foyer
8:00am-4:00pm	Workshop 1	Sound Stage
12:00pm-1:00pm	Lunch (provided)	Sound Stage Foyer

### Thursday, June 21, 2018

7:30am-4:00pm	Registration & Vendors	Foyer
8:00am-4:00pm	Workshop 2, Day 1	Arch Rock, Friendship Alter
12:00pm-1:00pm	Lunch (provided)	Summit Room

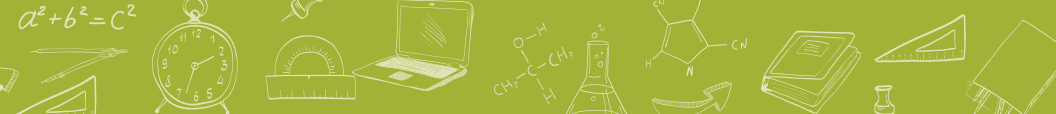
### Friday, June 22, 2018

7:30am-4:00pm	Registration & Vendors	Foyer
8:00am-4:00pm	Workshop 2, Day 2	Arch Rock, Friendship Alter
12:00pm-1:00pm	Lunch (provided)	Summit Room

## PREPaRE Materials

Workshop participants receive a set of curriculum materials provided in booklet and CD format. Participants are encouraged to use these resources for local staff development but may not represent them as formal “PREPaRE” training unless they have successfully completed the Training of Trainers workshop(s).





## Registration Information

Cost of Registration:	MASP MEMBER	NON-MASP MEMBER
Workshop 1	\$125	\$175
Workshop 2	\$175	\$200
Combined	\$300	\$375

### ONLINE REGISTRATION IS REQUIRED.

Please visit **[www.maspweb.com](http://www.maspweb.com)** to register for this event. Early registration is encouraged - space is limited to **100 participants**.

**Refund Policy:** Refunds will not be made routinely. All refunds are subject to an administration fee of \$75.00 per workshop. Requests for a refund must be made by email or in writing and postmarked no later than 06/01/2018. Please allow 4 weeks for refund. Registration transfers will be offered without penalty.

### State Board Continuing Education Clock Hours/NASP CPD Credits:

Participants who complete Workshop 1 earn 6.5 NASP CPDs, and completion of Workshop 2 earns 13 NASP CPDs. Similarly, 6 SCECHs are available for Workshop 1, and 13 SCECHs are available for Workshop 2, pending approval. Credit can only be awarded for attending each Workshop, in its entirety.

*Only individuals who are part of the MDE certification process should register for SCECHs. MASP no longer charges attendees a fee for SCECHs and NASP CPDs.*

### ADA Accommodation

MASP welcomes our colleagues with disabilities to the conference. To provide appropriate accommodations (as described under the Americans with Disabilities Act of 1990), attendees with a disability covered under the ADA (*Public Law 101-336, Section 102*) who require accommodation should write to MASP to request the specific accommodation required. **Send your correspondence to Hannah Barrow, MASP Conference Chair, 104 Fairway Court, Kewadin, MI 49648, or by e-mail to [hannah.barrow@gmail.com](mailto:hannah.barrow@gmail.com).** Please send your request at your earliest possible opportunity to provide sufficient time to help ensure the availability of accommodation services. Please note that MASP cannot guarantee accommodation for individuals who do not preregister for the convention and request accommodation by **June 1, 2018**.

## Travel & Stay Information

### Room Rates

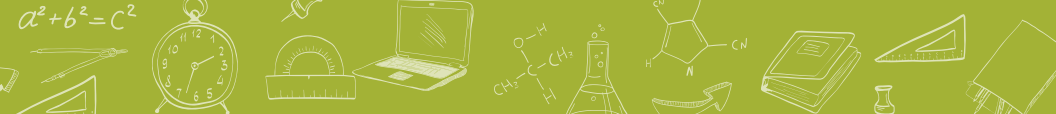
Mission Point is pleased to offer guests with the Michigan Association of School Psychologist a room rate of **\$169.00 per room, per night based on single or double occupancy and two-room family and junior suites at a rate of \$219.00**. More details on overnight accommodations can be found at [www.missionpoint.com](http://www.missionpoint.com)

- The above room rates do not include 6% sales tax, 2% local assessment, 10% resort levy.
- A one-time charge of \$6.00 per person will apply for luggage transfer from the mainland to the resort and back.
- Children 17 years of age & younger stay for free. Children 12 & under eat for free.
- \$25.00 additional per guest for triple and quad occupancy.



### Reservation Instructions

- Reservations can only be made by calling group reservations at (800) 833-7711
- All reservations must be made by Friday, May 18, 2018. Rooms are based on availability at the time of calling in.
- An advanced deposit of one night's room and tax is required to confirm your reservation. Mission Point Resort accepts Visa, Mastercard, American Express & Discover. Credit card will be charged for the deposit at the time of booking.
- Guests who check out and depart early will be charged the full stay
- If paying by check, reservation will be held for 10 days pending receipt of the check.
- Reservations must be canceled at least 14 days prior to arrival to receive full refund.



## Travel & Stay Information

### Ferry Service to the Island

As a carrier for Mission Point, Shepler's Mackinac Ferry will offer the guests of Michigan Association of School Psychologists a discounted price per round trip ticket for adults & children. Self-parking (complimentary) or valet parking are available. The ferry ride is approximately 16 minutes. Please visit the Shepler's Mackinac Ferry website for ferry schedule & plan your travel itinerary accordingly. [www.sheplersferry.com](http://www.sheplersferry.com). You may also like Shepler's Mackinac Ferry on Facebook to receive updates.

### Horse Drawn Shuttle Service

With every ferry that pulls into the harbor is a hotel shuttle that transports guests & luggage to the resort. This service is \$5, per person, and cash is paid directly to the driver. For special requests please call Mackinac Island Carriage Tours Taxi at 906-847-3323. This service is not owned, or operated, by Mission Point Resort. The distance between the ferry dock & resort is less than  $\frac{3}{4}$  mile for those who wish to enjoy a leisurely stroll through downtown where shopping, dining & site seeing are flourishing. Luggage items will still be taken to the resort by the shuttle. There is no shuttle service between 12pm-2pm.

### Explanation of Transporting Personal Items

- Upon arrival to the ferry dock, all vehicles & guests will be greeted by a Shepler's dock porter
- Dock porters will unload all luggage items and tag them with a Mission Point tag
- All luggage items will be loaded onto a cart & the guest will receive luggage claim tickets for all items
- This process is very similar to checking luggage at an airport. Be sure to pack a light carry on with necessary items.
- Upon arrival to the island, the cart with luggage items will be taken to the resort by horse drawn carriage.
- Guests will have the option to walk to the resort or take a horse drawn shuttle service. The distance is approximately  $\frac{3}{4}$  mile
- Once at the resort, the front desk agent will ask for luggage claim tickets & all luggage will be delivered to your hotel room
- Upon departure, bellmen will come to the sleeping room to provide outgoing tags
- Items will be held in a secure holding area on the mainland until they are claimed with the outgoing claim ticket
- If you have business items to transport, please contact your Conference Service Manager for shipping instructions



# MASP

Michigan Association of School Psychologists

124 East Gull Lake Drive  
Augusta, MI 49012

PRSRT  
FIRST-CLASS  
U.S. POSTAGE  
**PAID**  
SAGINAW, MI  
PERMIT NO. 52

# 2018

Summer Conference

June 20 - 22, 2018

Mission Point

Mackinac Island, Michigan